

GENERAL INFORMATION

INDUSTRY

Glass and ceramics

MACHINE

Fuse on M7 motor

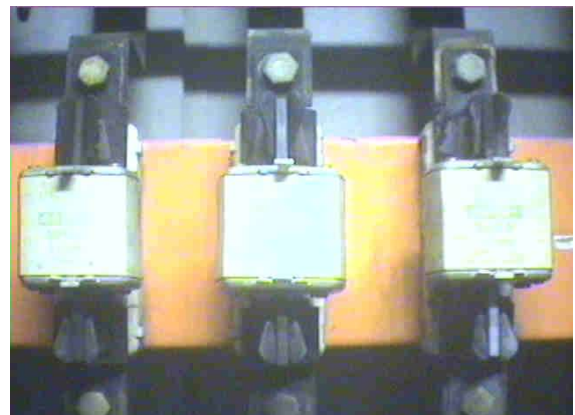
TECHNOLOGY USED

Infrared thermography

PROBLEM ENCOUNTERED

In the course of the infrared thermography inspection made periodically according to the predictive maintenance plan, an abnormal temperature increase on the fuse on phase S was observed.

Three phases fuses image



RESULTS OF ANALYSIS

DIAGNOSIS

Infrared thermography had highlighted a temperature above the tolerance level on phase S. The cause of the temperature increase was traced to a loose-fitting fuse socket above phase S (maximum temperature was 120 °C).

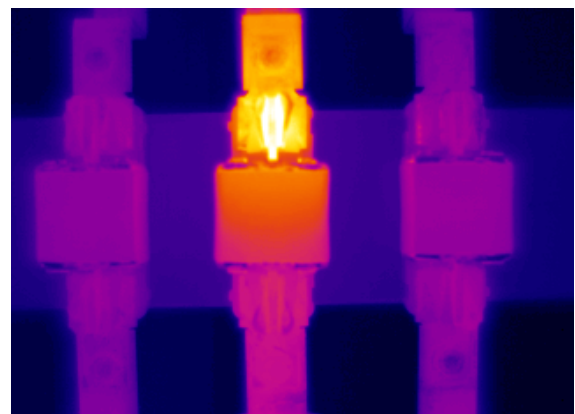
EVALUATION

Extreme

RECOMMENDATIONS

Replace, as soon as possible, the fuse and the fuse socket.

Infrared thermography image – abnormal temperature



RESULTS OF ACTION TAKEN

RESULTS OF INSPECTION / CHECK UP

Following the replacement of the fuse socket, the maximum temperature observed had noticeably decreased, from 120 °C to 60 °C, confirming the diagnosis.

AVOIDED OCCURENCE

Broken fuse, leading to the motor stopping and a half in the production line, and emergency replacement.

AVOIDED DOWNTIME

2 hours of plant shut-down (including start-up time)

COST BENEFIT OF LOST PRODUCTION AVOIDED

6.000 euro

Infrared thermography image – following the replacement

